



épo  
COSMETICS

The logo features the brand name 'épo' in a white, minimalist, sans-serif font. The 'é' has a small accent above it. Below the brand name, the word 'COSMETICS' is written in a smaller, all-caps, white, sans-serif font. The background of the entire page is a photograph of delicate white flowers with green stems, set against a soft, out-of-focus blue sky. The flowers are in sharp focus in the foreground, while the background is blurred.

PURITY INTENSE

## Healthy skin is beautiful skin!

### Effective and soothing care for sustainably clarified and balanced skin

Blemished skin and problem skin are widespread skin conditions that can be caused by various factors. Among the most common are excessive sebum production, clogged pores, hormonal changes, stress, unhealthy diet and genetic predisposition. These factors can lead to acne, blackheads, pimples, inflammation and redness that affect the appearance of the skin.

A healthy lifestyle and diet play a crucial role in the care of impure skin. A balanced diet, drinking enough water and regular exercise can help to improve skin health. It is also important to cleanse and care for the skin properly to remove excess sebum and dirt and keep the pores clear.

Choosing the right skincare products is also crucial. Products with ingredients such as salicylic acid, keratolytic enzymes, marine extracts and tea tree oil can help fight blemishes and clear the skin. It is important to use the products consistently to achieve optimal results.

In addition to skin care at home, a visit to the beauty salon is also beneficial. Professional treatments such as facial cleansing, peels, skin advice and targeted applications can significantly improve the appearance of problem skin. Regular care by a skincare expert helps to identify individual needs and offer suitable solutions.

Overall, it is important to understand that while blemished and problem skin can be challenging, it can be managed with the right skin care, lifestyle and professional support. A holistic approach that considers both the external and internal health of the skin is the key to a clearer and healthier complexion.

The formulations of the être belle **PURITY INTENSE** skincare range, which are specially tailored to problem skin, help impure, irritated skin to regain its natural balance.





- 5073 Pure Cleansing Gel
- 5075 Refreshing Toning Gel
- 5074 Gentle Enzyme Scrub + Mask



- 5076 Purifying Gel
- 4071 SK-10 Ampoule



- 5071 24 Hour Facial Care Cream
- 5072 Ultra-Effect Facial Fluid



- 3109-09 Enzyme Mask Powder
- 3503 Sea Mud Purifying Face Mask Powder
- 3504 Purifying Face Mask Powder



5073

### Pure Cleansing Gel

Gentle yet thorough cleansing gel clarifies the skin without drying it out and has a mild antiseptic effect. The targeted combination of salicylic acid and panthenol soothes irritation and activates the skin's ability to absorb all subsequent products.

Recommended for both men and women.

### Indication

For combination and oily skin  
For problem skin and acne

### Active Ingredients

- Salicylic acid - clarifying, keratolytic, promotes sebum secretion, anti-comedogenic
- Pro-vitamin B5 - soothing, regenerating, strengthening, moisturizing
- Glycerin - retains moisture, increases skin hydration, prevents dehydration

### Application

Apply to moistened facial skin in the morning and evening, lather well and massage in, then rinse off with plenty of water.

The cleansing gel is also ideal for removing make-up. Avoid the eye area, eye make-up should be removed with the *Bi-Phasic Make-up Remover*.

### Benefits

- Pore-deep clarified skin
- Impurities can be prevented
- Inflammation can already be alleviated during cleansing
- With regular use, problem skin and acne can be better controlled

<b>Retail size</b>	Art.-No. 5073 150 ml
<b>Professional size</b>	Art.-No. 5073-73 500 ml
<b>Sample/Sachet</b>	Art.-No. 5073-50 3 ml

### clarifying – refreshing



5075

### Refreshing Toning Gel

After cleansing, the tonic quickly and reliably stabilizes the skin's natural acid mantle. It also has a strong anti-inflammatory and refreshing effect and is characterized by its anti-microbial action. Witch hazel in combination with panthenol soothes irritated and inflamed skin, supports the natural healing process and refines the skin's appearance.

#### Indication

For combination and oily skin  
For acne skin

#### Active Ingredients

- Puramex Zn - anti-bacterial, promotes wound healing, balancing, regulating, anti-oxidative
- Witch hazel - anti-inflammatory, promotes wound healing, astringent, regulating
- Provitamin B5 - soothing, regenerating, strengthening, moisturizing
- Bisabolol - anti-microbial, anti-inflammatory, stimulates cell renewal

#### Application

Apply to a cotton pad in the morning and evening after cleansing and spread over the skin in circular movements. Then complete the skincare ritual with the recommended products.

#### Benefits

- Stable acid mantle - strong protection against aggressive germs
- Say goodbye to inflammation, itching and tightness!
- A more balanced and relaxed complexion
- Subsequent products can be better absorbed

**Retail size**                      Art.-No. 5075  
190 ml

**Professional size**              Art.-No. 5075-75  
500 ml

**balancing – refreshing**



5074

### Gentle Enzyme Scrub + Mask

The peeling with dual application option uses fine abrasive particles to gently remove dead skin cells. As classic mechanical exfoliation should not be used for inflammatory processes, the *Gentle Enzyme Scrub + Mask* also offers a unique combination of papain, salicylic acid and acacia extract for gentle enzymatic exfoliation for use as a peeling mask. Regular exfoliation can make a significant contribution to improving the condition of the skin, especially problem skin. It promotes cell renewal, refines the pores and supports a radiant, clear complexion.

### Indication

For combination and oily skin, for very calloused skin  
For problem skin and acne

### Active Ingredients

- Papain - protein-splitting enzyme, exfoliating effect without mechanical irritation
- Beta Hydroxide™ ACSD - keratolytic effect targeted at the horny layer
- Grape seed oil - anti-oxidative, nourishing, regenerating, cell renewing

### Application

For normal skin                      The peeling can be applied manually or using a device. After exfoliation, remove the residue, tone the skin and continue with the skin care ritual or treatment.

For inflammatory skin            Apply the peeling to the cleansed skin like an opaque mask. After leaving on for 10 minutes, thoroughly remove the residue with warm, moist compresses. Tone the skin and continue with the skin care ritual or treatment.

### Benefits

- Classic peeling and mask in one
- Deep pore cleansing + refinement of the skin texture
- Soothes problem skin and has a balancing effect on sebum production
- Prevents new impurities and inflammation in the long term

**Retail size**                      Art.-No. 5074  
75 ml

**Professional size**            Art.-No. 5074-74  
200 ml

**intensive clarifying - preventive**



5076

### Purifying Gel

The *Purifying Gel* offers a targeted solution for blemishes and inflammation. Enriched with soothing, wound-healing ingredients, it works effectively against skin irritations. The gel soothes itching and supports skin regeneration. Thanks to its versatile action, it can be used both locally and over large areas to combat skin impurities and promote skin health.

### Indication

For use on pronounced areas of inflammation

Can also be used locally as an SOS product

### Active Ingredients

- Lichen extract - intensely anti-bacterial, anti-fungal
- Camphor - strongly anti-septic and anti-bacterial, anti-inflammatory, circulatory
- Allantoin - promotes healing processes, soothing, cell-renewing, smooth skin feel
- Pro-vitamin B5 - soothing, regenerating, strengthening, moisturizing

### Application

Cleanse and tone the skin. Then apply the *Clarifying Gel* to the impurities and areas of inflammation over a large area or locally as required.

Then apply the *24 Hour Facial Care Cream* or the *Ultra-Effect Facial Fluid*.

### Benefits

- Promotes the healing of inflammatory foci
- Normalizes problem skin
- Relieves signs of inflammation and itching

➔ PROFI-TIP: Apply after professional cleansing to calm the skin

**Retail size**

Art.-No. 5076

30 ml

**anti-septic – healing support**



4071

### SK-10 Ampoule

The active ingredient concentrate *SK-10 Ampoule* combines the balancing effects of lichen extract, octopirox, licorice root extract and witch hazel to provide comprehensive skin care for highly inflamed skin. Lichen extract and octopirox have an antibacterial effect and effectively combat skin irritations. Licorice root extract reduces inflammation and promotes wound healing, while witch hazel strengthens and balances the skin. This highly effective combination soothes the skin, promotes its regeneration and strengthens its natural protective barrier. Ideal for anyone looking for a gentle and effective solution for problem skin

### Indication

For blemished skin and acne

### Active Ingredients

- Lichen extract - anti-bacterial, anti-mycotic
- Octopirox - anti-microbial, has a balancing effect on the bacterial environment on the skin
- Hamamelis - anti-inflammatory, astringent, regulating
- Licorice root extract - strongly soothing, anti-itching, anti-inflammatory

### Application

Use as a cure or daily. After cleansing and toning. Pour the contents of the ampoule into the palm of your hand and apply to the face, neck and décolleté. Gently pat into the skin and it is quickly absorbed. Then apply the recommended skin care cream.

### Benefits

- Relief of inflammation and irritation
  - Regulation of sebum production
  - Strengthening the skin's resistance
- ➔ Ideal for treatments in the *Purity Intense*-concept  
 ➔ Ideal for treatments for inflammatory skin conditions

Retail size

Art.-No. 4071  
10 x 1,5 ml

**anti-inflammatory – clarifying – regulating**



5071

### 24 Hour Facial Care Cream

Ideal basic skin care for day and night. The slightly mattifying and moisturizing texture has an antibacterial effect and reduces inflammation. Sebum-regulating and keratolytic active ingredients reduce skin impurities and counteract inflammation. Regular and continuous use helps the skin to restore and maintain its natural balance.

#### Indication

For combination skin with dry cheeks and few areas of inflammation

#### Active Ingredients

- Puramex Zn - anti-bacterial, promotes wound healing, balancing, regulating, anti-oxidative
- Beta Hydroxide™ ACSD - keratolytic effect targeted at the horny layer
- Grapefruit extract - anti-bacterial, anti-oxidative, protective, promotes regeneration
- Allantoin - promotes healing processes, soothing, cell renewal, smooth skin feel

#### Application

Apply to cleansed and toned skin in the morning and evening. In the case of isolated inflammations, the *Clarifying Gel* can be applied locally to the inflammation beforehand.

#### Benefits

- Balanced complexion
- Regulation of sebum production
- Prevents blemishes and inflammation
- Promotes the healing of inflammation

<b>Retail size</b>	Art.-No. 5071 50 ml
<b>Professional size</b>	Art.-No. 5071-71 200 ml
<b>Sample/Sachet</b>	Art.-No. 5071-50 3 ml

**calming – preserving**



5072

### Ultra-Effect Facial Fluid

The light facial fluid soothes skin impurities and irritations. The active ingredient complexes it contains regulate existing sebaceous gland hyperfunction and give a matt complexion. Thanks to the keratolytic effects of this fluid, the complexion appears clear, even and refined. The skin's own repair processes are sustainably supported and cell growth and regeneration are gently activated. With consistent use, the skin regains its natural balance.

### Indication

For combination skin with a tendency towards isolated areas of inflammation and severe sebaceous gland hyperfunction

For oily, impure and Acne-skin

### Active Ingredients

- Puramex Zn - anti-bacterial, promotes wound healing, balancing, regulating, anti-oxidative
- Beta Hydroxide™ ACSD - keratolytic effect targeted at the horny layer
- Lavender extract - stimulating, supportive, antiseptic, calming, inhibits inflammation
- Bisabolol - anti-microbial, anti-inflammatory, stimulates cell renewal

### Application

Apply to cleansed and toned skin in the morning and evening. In the case of isolated inflammations, the *Clarifying Gel* can be applied locally to the inflammation beforehand.

Moisturizing ampoules can be combined very well with this care product.

### Benefits

- Reduced sebaceous gland hyperfunction
- Naturally matt appearance
- Balanced complexion and refined skin texture
- Prevents blemishes and inflammation
- Ideal make-up base

**Retail size**                      Art.-No. 5072  
50 ml

**Sample/Sachet**                 Art.-No. 5072-50  
3 ml

**mattifying – anti-bacterial**



3109-09

**Enzyme Mask Powder**

The professional peeling product with bromelain, an enzyme combination from pineapple, gently dissolves the intermediate cell substance in the horny layer and removes dead and inactive skin cells, cleanses the skin thoroughly and prepares each skin optimally for the subsequent treatment steps.

**Indication**

For all skin types

Ideal for acne and combination skin with inflammation

**Active Ingredients**

- Bromelain - keratolytic effect

**Application**

- Cover eyes with a damp cotton pad
- Mix 1,5 - 2 tsp *Enzyme Mask Powder* with 1 tsp *Aloe Vera Ultra Moisturizing Gel*, apply with a brush
- Moisten the enzyme peeling (vaporize) - exposure time: 10 minutes
- Remove with warm moist compresses, tone the skin and continue the treatment

**Benefits**

- Gentle exfoliation for all skin types
- Thorough cleansing
- Optimal preparation for all subsequent treatment steps
- Refined skin texture

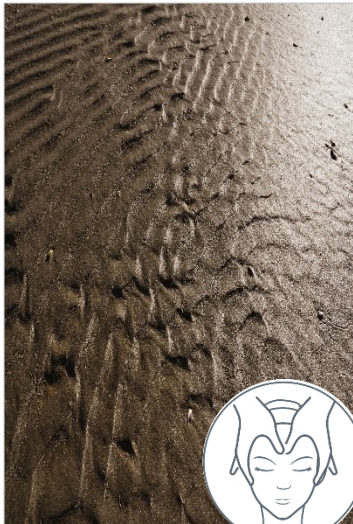
➔ Ideal for all treatment concepts

**Professional size**

Art.-No. 3109-09

100 g (➔ approx. 10 treatments)

**gently clarifying – preparing**



3503

**Sea Mud - Purifying Face Mask Powder**

The peel-off mask with sea mud, Dead Sea salt and tea tree oil is specifically developed to soothe, clarify and balance combination or oily skin with single to few signs of inflammation. The synergistic effect of these ingredients clarifies the skin, reduces redness, remineralizes and moisturizes. Enriched with the purifying properties of sea mud and Dead Sea salt, impurities are gently removed, while tea tree oil has an antibacterial effect and soothes the skin. The appearance of pores is refined, the complexion is mattified and the skin is smooth and soft.

**Indication**

For blemished skin with a tendency to overproduction of sebaceous glands  
For single to few areas of inflammation

**Active Ingredients**

- Sea mud - keratolytic, anti-bacterial, promotes wound healing
- Dead Sea salt - remineralizing, anti-inflammatory, soothing
- Tea tree oil - anti-bacterial, anti-oxidant, anti-inflammatory
- Lemon oil - immune-boosting, firming, anti-oxidant, complexion balancing

**Application**

Pour the contents of the bag into a modeling bowl and add 90 ml of cold water. Mix with a spatula until a homogeneous mixture is obtained. Apply this mixture with the spatula to the face, neck and décolleté if necessary. Model the edges a little thicker. After 15 minutes, moisten the edges of the mask with a sponge. Then remove the mask in one piece.

**Benefits**

- Clarification of impurities
- Refinement of the skin texture
- Relieves inflammation and irritation
- Strengthening the skin's own resistance

➔ Ideal for treatments in the *Purity Intense*-concept

**Professional size**      Art.-No. 3502  
30 g (➔ 1 treatment)

**clarifying – calming**



3504

**Purifying Face Mask Powder**

The peel-off mask with diatomaceous earth, willow bark extract and tea tree oil is specifically formulated to relieve, clarify and strengthen blemished skin with increased signs of inflammation or acne. The combined effect of these ingredients sustainably relieves inflammation and itching, reduces redness and promotes the skin's own repair mechanisms, remineralizes and moisturizes. At the same time, this mask has a clarifying, anti-microbial and anti-free radical effect. The overall complexion appears more balanced and refined and the complexion is mattified. The skin feels velvety soft and even.

**Indication**

For acne and blemished skin with increased inflammation

**Active Ingredients**

- Diatomaceous earth - exfoliating, anti-inflammatory, promotes wound healing, soothing
- Willow bark extract - anti-inflammatory, soothes redness, anti-microbial
- Tea tree oil - anti-bacterial, anti-oxidant, anti-inflammatory

**Application**

Pour the contents of the bag into a modeling bowl and add 90 ml of cold water. Mix with a spatula until a homogeneous mixture is obtained. Apply this mixture with the spatula to the face, neck and décolleté if necessary. Model the edges a little thicker. After 15 minutes, moisten the edges of the mask with a sponge. Then remove the mask in one piece.

**Benefits**

- Relieves inflammation, redness, itching and irritation
- Clarification of impurities
- Strengthening the skin's own resistance
- Refines the appearance of the skin

➔ Ideal for treatments in the *Purity Intense*-concept

**Professional size**      Art.-No. 3504  
30 g (➔ 1 treatment)

**soothing – balancing**