

TECHNICAL PROTOCOL

BIOM+ SENSITIVE

REACTIVE SKIN BALANCE



BIOM+ SENSITIVE embodies the expertise of our laboratories in a global response adapted to the needs of sensitive and sensitized skin. Designed to target the fundamental mechanisms of skin hypersensitivity, this line acts on three complementary axes: rebalancing the microbiota, regulating the activity of sensory receptors and restoring the lipid barrier. The skin thus regains its essential biological functions, improves its tolerance and strengthens its resilience in a sustainable way.

SKIN PHYSIOLOGY

The skin plays a vital role as a protective barrier between the body and the environment. It has physiological barriers that are essential for maintaining its homeostasis: microbial, immune, and mechanical barriers. These systems are interconnected: the alteration of one often leads to an imbalance in the other two.

THE MICROBIAL BARRIER

A living ecosystem of bacteria, fungi, viruses and mites, present on the surface of the stratum corneum, in pilosebaceous follicles and sweat glands. It is made up of a **resident flora** (stable, beneficial, protective) and a **transient flora** (transient, sensitive to environmental variations).

Essential roles:

- Prevents colonization by pathogens.
- Stimulates the production of antimicrobial peptides.
- Constant dialogue with the neurocutaneous network to maintain balance.

THE IMMUNE BARRIER

The skin, a highly innervated and immunocompetent organ, has a **neuro-immuno-cutaneous system (NIC)** that closely connects nerve, immune and skin cells. Under normal conditions, this defense mechanism quickly restores balance after an aggression, but when it becomes dysregulated, it can lead to hypersensitivity, persistent inflammation and reduced tolerance.

Essential roles:

- Sentinel role: detects aggressions, transmits warning signals to the nervous system, and then triggers and regulates the inflammatory response.
- Contributes to tissue repair and the maintenance of skin integrity.

THE MECHANICAL BARRIER

The **stratum corneum** functions as a **biological protective wall** according to the «brick and mortar» model:

Bricks: flattened dead cells (corneocytes).

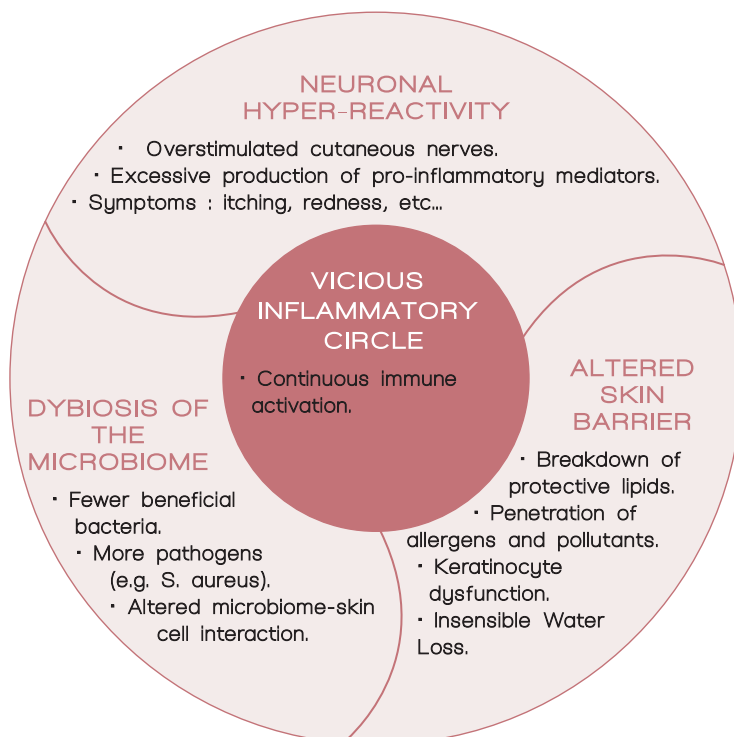
Mortar: lipid mixture rich in ceramides (~50%), cholesterol and free fatty acids, organized in lamellar layers.

Essential roles:

- Prevents skin dehydration.
- Protects against the penetration of microbes, allergens and pollutants.
- Maintains skin comfort and skin suppleness.

PHYSIOPATHOLOGY OF SENSITIVE SKIN

When the skin's balance is disrupted, the three protection systems are altered, triggering an **inflammatory vicious circle** which, without appropriate care, worsens over time and leads to a gradual loss in skin tolerance and chronic discomfort.



THE TECHNOLOGY

BIOM+ SENSITIVE's advanced expertise acts simultaneously on the three major biological pillars of skin sensitivity thanks to its multi-target technology : **three-phase physio-regulation**, a novel approach to restore skin homeostasis in an effective and sustainable way.

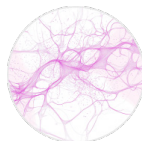
MICROBIOME BALANCE TECHNOLOGY



MICROBIOME REGULATION

- Rebalances the skin ecosystem.
- Increases beneficial microbial diversity and limits the proliferation of opportunistic species.

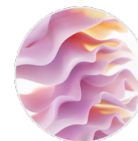
NEURO-SOOTHING COMPLEX



MODULATION OF NERVE HYPER-REACTIVITY

- Soothes excessive transmission of sensory signals.
- Reduces uncomfortable skin manifestations.

LAMELLAR BIOLIPIDIC SYSTEM



RESTAURATION OF THE LIPID BARRIER

- Rebuilds lamellar structure and strengthens cell cohesion.
- Limits insensible water loss.

ACTIVE INGREDIENTS

1. MICROBIOTA TECHNOLOGY

The Microbiome-Balance technology, with its « **prebiotic-like** » action, helps to recreate the conditions for a stable microbiota. This technology promotes the growth of beneficial commensal bacteria in the resident flora while limiting the proliferation of pathogenic microorganisms.

ORIGINE

Oligosaccharides extracted from Mondo grass (*Ophiopogon japonicus*), carefully selected for their ability to support the diversity and balance of the skin microbiota (AD-Resyl®).

MECHANISM OF ACTION

Strengthening of skin vigilance through the activation of Toll-Like Receptors, real «sensors» capable of recognising microorganisms and directing the skin's defences.

Stimulation of natural antimicrobial peptides (defensins, RNase), biological shields that help control unwanted flora.

Reduced adhesion of opportunistic germs to the surface of the skin and reduces the formation of pathogenic biofilm, creating an environment conducive to microbial diversity and skin stability.

IN VITRO EFFICACY

STIMULATION OF INNATE IMMUNITY (MICROBIAL DEFENSES)

Induction of key microbial detection receptors*

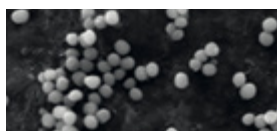
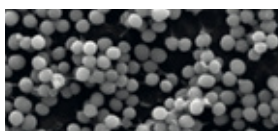
TOLL-LIKE RECEPTOR 2 (TLR2)	+80%
TOLL-LIKE RECEPTOR 6 (TLR6)	+69%

* Quantitative PCR method - AD-RESYL (0.15%)

Stimulation of antimicrobial peptides*

HUMAN BETA-DEFENSIN 2 (HBD2)	+117%
HUMAN BETA-DEFENSIN 3 (HBD3)	+52%
RIBONUCLEASE 7 (RNASE 7)	+74%

REDUCED ADHESION OF STAPHYLOCOCCUS AUREUS TO THE SKIN



*Electron microscopy. S. aureus occupancy area with AD-Resyl (0.15%)

-63%
pathogenic adhesion*

2. NEURO-CUTANEOUS TECHNOLOGY

Neuro-Soothing Technology is designed to regulate nerve hyper-reactivity, help reduce inflammation, and improve skin tolerance. It directly targets the **neuro-immuno-cutaneous system (NIC)**, the centre for controlling sensations and skin defences, to break the vicious circle of sensitive skin.

ORIGINE

Synergistic combination of 2 powerful active ingredients:

- Red sage root extract (*Salvia miltiorrhiza*), a traditional Chinese medicinal plant, rich in salvianolic acid (Neurofense®).
- Purified β -glucan obtained by natural fermentation of a rare fungus of the Atheliaceae family (Hydrasensyl®).

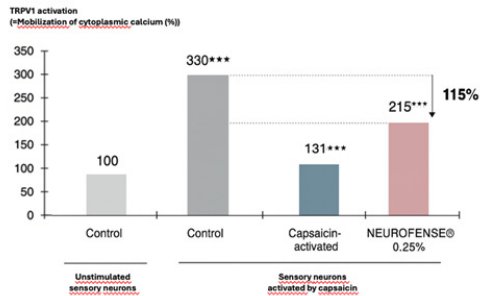
MECHANISM OF ACTION

The neuro-immuno-cutaneous system (NIC) coordinates nerve, immune and epidermal responses. In the event of a disorder, it triggers an inflammation characteristic of sensitive skin. The neuro-soothing complex corrects this imbalance by a double modulation of neuronal hyper-reactivity :

- Inhibition of TRPV1, a sensory pain receptor, reducing the transmission of discomfort signals (burning, itching and tingling).
- Reduction of pro-inflammatory neuromediators (Substance P, CGRP), limiting excessive neurogenic and immune reactions.

IN VITRO EFFICACY

DECREASED EXCITABILITY OF CUTANEOUS TRPV1 RECEPTORS



TRPV1 receptor inhibition
-115%^{1,2}

- 1 Use of capsaicin as a skin stress to stimulate the nociceptors producing TRPV1 (Transient Receptor Potential Vanilloid1), a reference marker for sensitive skin.
- 2 Co-culture of sensory neurons and human keratinocytes - Calcium flow method.

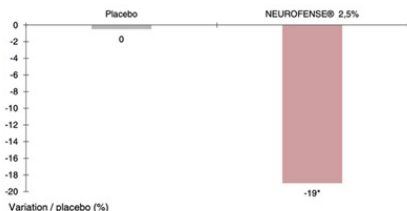
REDUCED PRO-INFLAMMATORY RESPONSE

Reduction of the pro-inflammatory response induced by microorganisms, UVB or chemical agents

AGENT IRRITANT	INFLAMMATORY MEDIATOR RELEASED	REDUCTION IN PRO-INFLAMMATORY RESPONSE (%) * with Hydrasensyl® Glucan (2.5%)
Chemical irritant -> Human keratinocytes irritated by Sodium Lauryl Sulfate	Interleukine 1a	-17%
Microorganism -> Human keratinocytes stimulated by S. aureus	Interleukin-8	-43%
UVB -> Human Keratinocytes Irradiated with UVB	PGE ₂ (Prostaglandine E2)	-24%

IN VIVO EFFICACY

DECREASED NEUROSENSITIVITY AND CLINICAL SIGNS



Decreased neurosensitivity
19%*

SKIN LESS SENSITIVE	REDNESS REDUCED	REDUCED SKIN DISCOMFORT
92% Vs placebo : 89%	94% Vs placebo : 87%	98% Vs placebo : 95%

* 128 Asian volunteers exposed to urban pollution for one year - Twice-daily application of a 2.5% NEUROFENSE gel on the face for 14 days.

3. RESTORATIVE TECHNOLOGY

Inspired by the natural architecture of the skin barrier, lamellar biolipid technology restores its integrity and preserves skin comfort. It provides the skin with essential **biomimetic lipids** to maintain its hydration and strengthen its protection against aggressions.

ORIGINE

Plant-derived lipids, composed of sphingolipids and phospholipids organized in liquid-crystalline lamellar structures (Ceramide complex®).

MECHANISM OF ACTION

This technology is based on a biomimetic concentrate of essential lipids (ceramides, fatty acids, cholesterol) assembled in an optimal ratio to faithfully reproduce the skin's protective structure. By naturally integrating into the lipid barrier, this «repairing cement» :

Reconstitutes the cutaneous lipid matrix thanks to a lamellar arrangement identical to that of the skin.

Strengthens cell cohesion to improve resistance and limit the penetration of irritants.

Optimizes water retention in the stratum corneum, ensuring deep and long-lasting hydration.

Protects the integrity of the skin barrier, while restoring comfort and suppleness to weakened skin.

THE BIOM+ SENSITIVE RANGE

BI-PHASE SOOTHING SERUM



RETAIL - E1180
Dropper bottle 30 ml

PROFESSIONAL - E1174
Available in the 4-session kit
E1173
12 ml dropper bottle



This serum, infused with a rice filtrate fermented by *Lactobacillus* and a biolipid complex, offers ultra-soothing action and strengthens the skin barrier. Its innovative biphasic formula blends with the skin for a smooth, non-greasy finish. The skin regains comfort, softness, and radiance.

Rice ferment filtrate extract: soothing and repairing
Ceramide complex: strengthens the protective barrier
Hydrasensyl: soothing and repairing prebiotic
Neurofense: soothes, provides comfort and protection
Neurophrolin: limits skin stress
Niacinamide: antioxidant, soothing, regenerating
Ad-resyl: soothing, rebalances the skin microbiota
Alpha-bisabolol – Centella asiatica extract: calming, repairing
D-Panthenol – Vitamin E: repairing, antioxidant
Pigment: natural origin from gromwell

EFFICACY

Skin reactivity -47%¹
Reinforced barrier 100%²
Calming effect 100%²
Visibly even skin tone 95%²
Calms irritation 95%²

ANTI-REDNESS FLUID



RETAIL - E1181
30 ml Tube

PROFESSIONAL - E1179
30 ml Tube



This anti-redness fluid, concentrated with green correcting pigments and oat extract rich in soothing flavonoids, visibly reduces redness from the first application. It evens out the complexion, revives radiance, and provides an immediate sensation of comfort. Its light and silky texture subtly corrects redness while illuminating the skin.

Phytami oat extract: soothing, nourishing
Hydrasensyl: soothing and repairing prebiotic
Neurofense: soothes, provides comfort and protection
Niacinamide: antioxidant, soothing, regenerating
Ad-resyl: soothing, rebalances the skin microbiota
Ceramide complex: strengthens the protective barrier
D-Panthenol - Vitamin E: repairing, antioxidant
Alpha-bisabolol - Centella asiatica extract: calming, repairing
Glycerin: moisturizing, softening, soothing
Ronafair green: encapsulated pigments – immediate color correction

EFFICACY

Less visible redness 100%³
Soothed skin 100%³
Complexion correcting effect 95%³
Hydrated skin 90%³
Texture comfortable 100%³

HYDRA-COMFORT CREAM



RETAIL - E1182
50 ml Jar

PROFESSIONAL - E1176
Available in the 4-session kit
E1173
Single-dose sachet 2 ml x 4



This cream, enriched with salivaniolic acid, niacinamide, and ginseng extract, offers soothing, antioxidant, and hydrating properties. It strengthens the skin barrier and supports the microbiota. The skin is immediately wrapped in a sensation of softness and hydration. Its light, whipped cream-like texture evens out the complexion and leaves a velvety, supple, and comfortable finish.

Ginseng extract: protects against premature aging – reparative
Hydrasensyl: soothing and repairing prebiotic
Neurofense: soothes, provides comfort and protection
Niacinamide: antioxidant, soothing, regenerating
Ad-resyl: soothing, rebalances the skin microbiota
Glycerin: moisturizing, softening, soothing
Ceramide complex: strengthens the protective barrier
Alpha-bisabolol – Centella asiatica extract: calming, reparative
D-Panthenol – Vitamin E: reparative, antioxidant

EFFICACY

Less reactive skin 95%⁴
Hydrated skin 90%⁴
Reduced redness 95%⁴
Tightness soothed 95%⁴
Warm-up reduction 95%⁴

NUTRI-BALANCE CREAM



RETAIL - E1183
50 ml Jar

PROFESSIONAL – Not available

This cream, enriched with salivaniolic acid, combines a fermented postbiotic extract of golden millet with a biolipid complex to hydrate, strengthen the skin barrier, and support the microbiome. It soothes sensitive skin and restores comfort to dry skin. Its rich texture nourishes without leaving a greasy feel.

Defensil: soothing postbiotic, strengthens the protective barrier
Hydrasensyl: soothing and repairing prebiotic
Neurofense: soothes, provides comfort and protection
Niacinamide: antioxidant, soothing, regenerating
Ceramide complex: strengthens the protective barrier
Ad-resyl: soothing, rebalances the skin's microbiota
Glycerin: moisturizing, softening, soothing
D-Panthenol - Vitamin E: repairing, antioxidant
Alpha-bisabolol - Centella asiatica extract: calming, repairing

EFFICACY

Calming effect 100%⁵
Nourished skin 95%⁵
Less visible redness 95%⁵
Stronger barrier 91%⁵
Reduction of Tightness 100%⁵

MICRO-EXFOLIATING POWDER

RETAIL – Not available

PROFESSIONAL - E1177
Available in the 4-session kit
E1173
Single-dose sachet 2 g x 4



Micro-exfoliating powder scrub for professional use, designed to exfoliate sensitive skin without irritation. Its gentle mineral base and soothing active ingredients remove dead skin cells while respecting the skin barrier and microbiome. The skin texture is refined, complexion revitalized, leaving skin visibly healthier and more comfortable.

Corn starch: soothes and respects skin irritations, calming
Alginate: softening and soothing action
Pelvetia extract: brown seaweed rich in polysaccharides and fucose, hydrating, anti-aging, and regenerating
Pumice: gentle exfoliant derived from porous volcanic rock, respectful of sensitive skin
Glycerin: moisturizing, softening, soothing

EFFICACY

(Tests in progress...)⁶

INSTANT REPAIR MASK



RETAIL - E1184
75 ml Tube

PROFESSIONAL - E1175
Available in the 4-session kit
E1173
50 ml Tube



This repairing mask, enriched with salivianolic acid and fermented extract of northern mushroom, deeply hydrates, soothes, and strengthens the skin barrier while rebalancing the microbiota. Its refreshing effect helps lower skin temperature, instantly relieving sensations of heat and discomfort. Its rich balm texture envelops the skin, providing an immediate comforting effect.

Coolin: refreshing, soothing, protective, and repairing ferment
Hydrasensyl: soothing and repairing prebiotic
Neurofense: soothes, provides comfort and protection
Niacinamide: antioxidant, soothing, regenerating
Ceramide complex: strengthens the protective barrier
Ad-ressyl: soothing, rebalances the skin microbiota
Candelilla wax: moisturizing, repairing
D-Panthenol - Vitamin E: repairing, antioxidant
Alpha-bisabolol - Centella Asiatica extract: soothing, repairing

EFFICACY	
Immediate soothing effect	91% ⁷
Irritation reduction	100% ⁷
Immediate repairing effect	86% ⁷
Regenerated skin	95% ⁷
Refreshing	77% ⁷

PREBIOTIC MOUSSE MASK

RETAIL - Not available

PROFESSIONAL - E1178
Available in the 4-session kit
E1173
Single-dose sachet 2 g x 4



Prebiotic mousse mask in powder form, designed for sensitive skin and for professional use only. Rich in pre- and postbiotics, it supports the biodiversity of the skin microbiome, strengthens the natural defense barrier, and regulates hydration. The skin regains its balance, comfort, and enhanced ability to protect itself from external aggressors.

Ecoskin: a complex of pre- and postbiotics - rebalances the microbiota, soothing and repairing
Rice starch: mattifying, absorbing, and soothing effect

EFFICACY	
(Tests in progress...) ⁸	

¹Instrumental efficacy test (stinging test method) - Application of the bi-phase serum on 22 volunteers with sensitive skin - Average reduction after 28 days.
²Self-assessment test under dermatological control - Application of the bi-phase serum on 22 volunteers with sensitive skin - Declarative results after 28 days.
³Self-assessment test under dermatological control - Application of the anti-redness fluid on 21 volunteers with sensitive skin - Declarative results after 28 days.
⁴Self-assessment test under dermatological control - Application of the hydra-comfort cream on 21 volunteers with sensitive skin - Declarative results after 28 days.
⁵Self-assessment test under dermatological control - Application of the nutri-balancing cream on 22 volunteers with sensitive skin - Declarative results after 28 days.
⁶Self-assessment test under dermatological control - Application of the micro-exfoliating powder - Declarative results after 28 days.
⁷Self-assessment test under dermatological control - Application of the repairing mask on 22 volunteers with sensitive skin - Declarative results after 28 days.
⁸Self-assessment test under dermatological control - Application of the prebiotic foam mask - Declarative results after 28 days.

THE PROFESSIONAL TOOL: SENSI-QUARTZ MASSAGERS

The BIOM+ SENSITIVE protocol is based on the use of a pair of SENSI-QUARTZ massagers, inspired by the Chinese Gua Sha tradition. This ancestral technique consists of gently sliding the tool over the skin to stimulate blood circulation and promote the elimination of toxins.



Narrow tip : eye contour,
mouth area, wrinkles and
targeted pressure points.



Wide tip : cheeks,
forehead, neck.

Ergonomic design

2 sides adapted to the different areas:

- A wide tip ideal for large areas,
- A narrow tip, perfect for contours and delicate areas.

Material: Natural rose quartz known for its soothing properties.

Intuitive grip for a fluid and harmonious massage gesture.

BENEFITS OF SENSI-QUARTZ MASSAGE

- Calms irritation, reduces redness, and soothes sensitive skin.
- Drains toxins and improves oxygenation of the skin.
- Decongests tissues.
- Stimulates microcirculation promoting tissue regeneration.
- Optimizes the absorption of the active ingredients of the treatment.
- These masseurs provide a soothing and deeply relaxing massage experience.

METHOD OF USE

- The SENSI-QUARTZ massage is performed with a massager in each hand allowing simultaneous and synchronized work on each side of the face.
- The steps of the massage use either the narrow or the wide mouthpiece.
- Each maneuver is repeated 3 times. The final move is performed only 1 time.
- The time spent on the massage is 15 minutes.
- The steps of the massage are detailed in the video of the professional protocol and available in the form of an illustrated document accessible via the QR code of this brochure.

KEY POINTS

RECOMMENDATIONS

Target: Sensitive, reactive or sensitized skin. Anyone with any form of skin sensitivity or dysfunction. (climatic conditions, post-procedure, treatments, etc.).

For men and women, young or mature.

Objective: To soothe without aggressing, to repair without irritating, to sublimate without compromising.

Main treatment: Cure of 4 treatments.

COMBINATIONS OF MULTI-THERAPY

As a starter treatment for an ANTI-IMPERFECTION cure or an ANTI-AGING cure for mature skin suffering from discomfort and sensitivity or a VITAMIN ENERGY cure.

Alternate with other ESSENTIAL care.

As a relay, positioned immediately after a NOVAPEEL or VITAMIN ENERGY cure or intensive treatment, and after the aesthetic procedure.

REMEMBER

Three-phase physio-regulation to break the vicious circle of inflammation:

- Rebalanced microbiome
- Soothed nerve receptors
- Restored skin barrier

Integrated Cutaneous Neuro-immuno-cutaneous (NIC) Approach

- Interacts with sensory receptors, the immune system, and the microbial ecosystem.
- Inspired by biological mechanisms to rehabilitate sensitive skin.

Microbiome-friendly & high tolerance

Targeted active ingredients that respect the skin microbiota.

Fragrance-free, for maximum tolerance.

Dermatologically tested on sensitive skin.

Suitable for all skin types.

BIOM+ SENSITIVE PROFESSIONAL PROTOCOL

Designed for easily sensitized or reactive skin, this treatment combines an intensive, high-tolerance formulation with a targeted massage performed with an expert tool designed to gently de-stress, drain and decongest. From the first session, it provides immediate relief, helps the skin regain its comfort, luminosity and a visibly more even complexion. The skin rejuvenates. She regains her serenity.



1		<p>MAKEUP REMOVAL - CLEANSING</p> <p>Clean the face, neck and décolleté with BIO-RESPECT CLEANSING MILK E149. Rinse with lukewarm water. Follow with cotton pads soaked in BIO-RESPECT CLEANSING LOTION E150.</p>	<p>8 min.</p>
2		<p>EXFOLIATION</p> <p>In a bowl, mix 1 sachet of MICRO-EXFOLIATING POWDER E1177 with a few drops of water to create a creamy foam. Using a brush, apply the mixture on the face, neck and décolleté, avoiding the eye contour. Gently massage with circular motions and lights pressure for 3-5 minutes. Rinse with lukewarm water and the follow with cotton pads soaked in BIO-RESPECT CLEANSING LOTION E150.</p>	<p>10 min.</p>
3		<p>SERUM APPLICATION</p> <p>Shake the bottle beforehand and release the content of 5 fully fill pipettes of BI-PHASE SOOTHING SERUM E1174 into the palm of the hand and apply immediately to the face, neck and décolleté. <u>Instruction:</u> Before drawing up the serum, expel any air from the pipette outside the bottle to ensure precise dosage.</p>	<p>5 min.</p>
4		<p>MANUAL MASSAGE</p> <p>Apply the INSTANT REPAIR MASK E1175 and perform a relaxing massage for 15 minutes using very gentle strokes.</p>	<p>15 min</p>
5		<p>MASK APPLICATION</p> <p>Pour 35 ml of lukewarm water into a bowl and sprinkle evenly the content of a sachet of PREBIOTIC MOUSSE MASK E1178. Let the powder soak for a few seconds, then gently mix with a spatula and after apply with a brush on the face and neck.</p>	<p>5 min.</p>
6		<p>MASSAGE WITH TOOLS</p> <p>Perform a gentle facial massage with the SENSI-QUARTZ MASSAGERS E1116. Refer to the massage techniques detailed in the professional protocol.</p>	<p>15 min</p>
7		<p>MASK RESTING TIME AND REMOVAL</p> <p>Place 2 cotton pads soaked in PHYTO-CALMING LOTION EYE ZONE E1064 on the eyelids. Leave the mask on for 10 minutes. Gently remove the excess texture and rinse with lukewarm water. Finish cleaning by using 2 cotton pads soaked in BIO-RESPECT CLEANSING LOTION E150.</p>	<p>11 min.</p>
8		<p>LIGHT MASSAGE</p> <p>Apply the YOUTH LIFT GEL E1063 with a light massage around the eyes. Light tapping movements with HYDRA-COMFORT CREAM E1176 all over the face and neck.</p>	<p>4 min.</p>
9		<p>REDNESS CORRECTION</p> <p>Apply the anti-redness fluid E1179 to areas with redness.</p>	<p>2 min.</p>

4 SESSIONS
TREATMENT

SESSION LENGTH
75 MINUTES

SESSION FREQUENCY
ONE A WEEK



LABORATOIRE ERICSON
92800 Puteaux

www.ericsonlaboratoire-paris.com